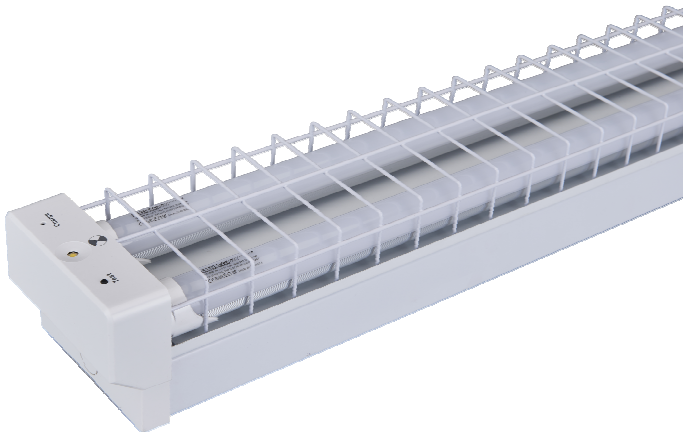
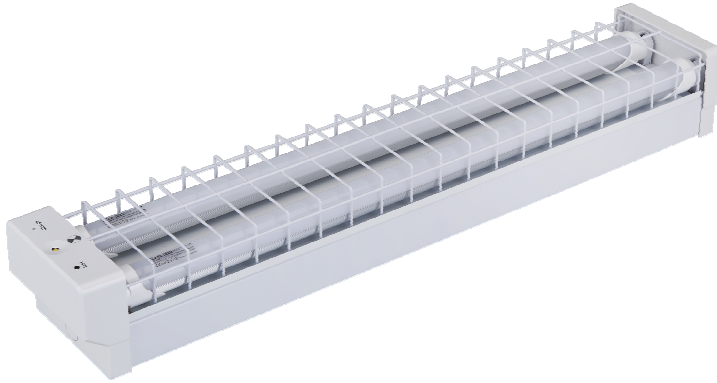


EMERGENCY BATTEN- Wire Guard



Item Code	SP210WGEM/SEN
Sensor	Starlux sensor
Input Voltage	220-240AC
Frequency	50/60Hz
Size of the Lamp	637*120*88mm
Material	Metal + PS
Operating Temp	0~40°C
AC Stage LED Power	2*9W LED Tube
DC Stage Light Source	3W LED chip (DC wattage:1.7W)
Battery	4.8V 1800mAh NI-MH
Charge Time	16 hours
Discharge Time	2 hours
Emergency Lumen	140lm
LED Lifespan	40,000 hours
Work Mode	Maintain
Installation	Surface Mounting
Indicator	Red-Charging
Test	Manual Test Switch
Connection	Terminal Block
Protection	Over-Charge /Over-Discharge
Classification	C0:D25,C90:D25
Standard	AS2293 IEC60598-2-22



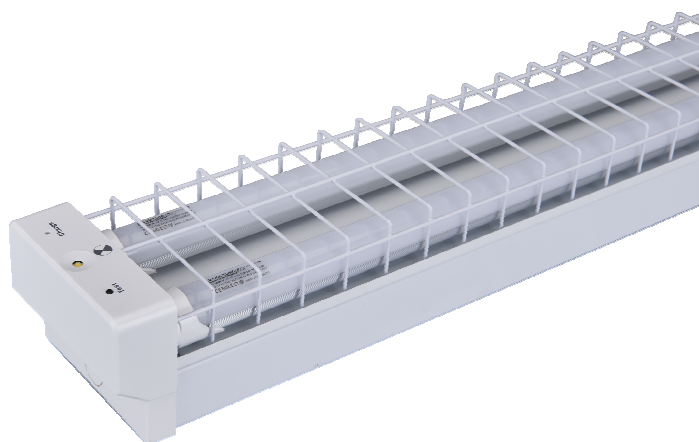
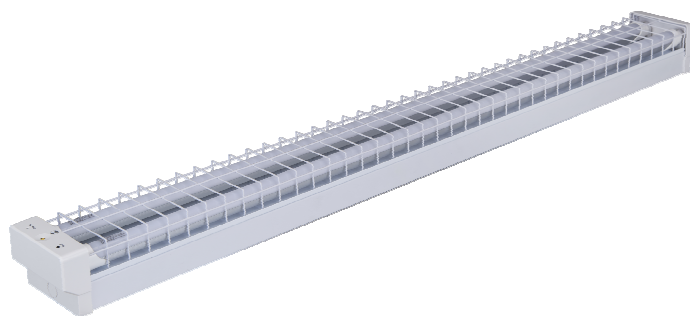
Ta 0°C-40°C



Tested By **Nemko**

Certified By **SAA**
APPROVALS
AS/NZS 2293 CERTIFIED

EMERGENCY BATTEN - Wire guard



Item Code	SP220WGEM/SEN
Sensor	Starlux sensor
Input Voltage	220-240AC
Frequency	50/60Hz
Size of the Lamp	1247*120*88mm
Material	Metal + PS
Operating Temp	0~40°C
AC Stage LED Power	2*18W LED Tube
DC Stage Light Source	3W LED chip (DC wattage:1.7W)
Battery	4.8V 1800mAh NI-MH
Charge Time	16 hours
Discharge Time	2 hours
Emergency Lumen	140lm
LED Lifespan	40,000 hours
Work Mode	Maintain
Installation	Surface Mounting
Indicator	Red-Charging
Test	Manual Test Switch
Connection	Terminal Block
Protection	Over-Charge /Over-Discharge
Classification	C0:D25,C90:D25
Standard	AS2293 IEC60598-2-22



Ta 0°C-40°C



Tested By **Nemko**

Certified By **SAA**
APPROVALS
AS/NZS 2293 CERTIFIED