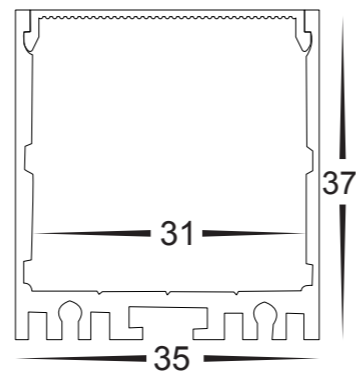


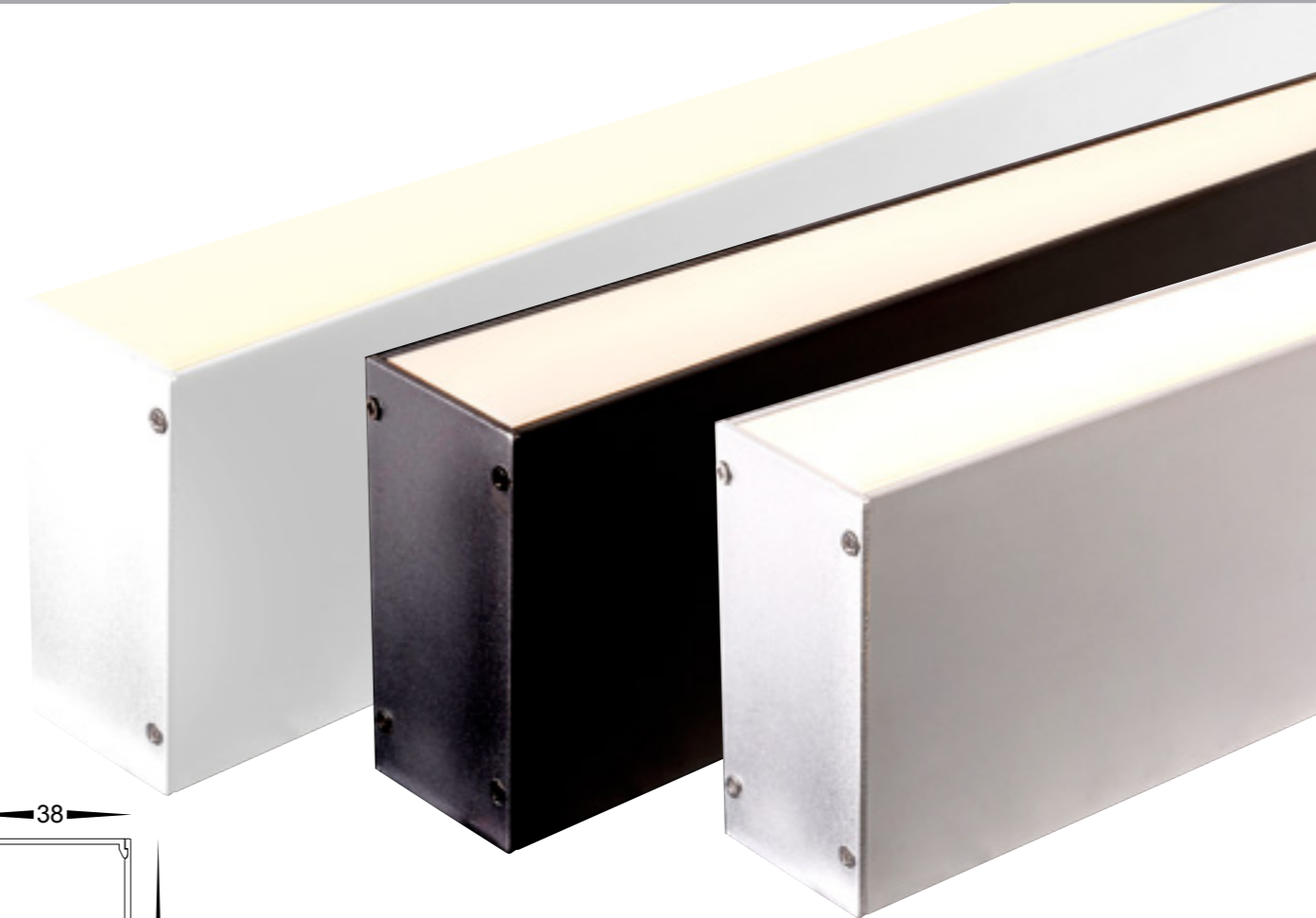
Square LED Profile

- Deep square profile
- UV Stabilised PC diffuser



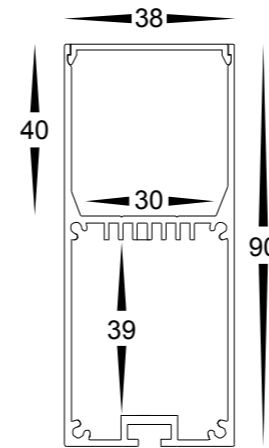
| PART NUMBER | DESCRIPTION | IP RATING | MAX LENGTH |
|---------------------------|--|-----------|------------|
| HV9693-3537 | 35mm x 37mm Deep square profile with UV Stabilised PC diffuser | IP20 | 3 metres |
| HV9693-3537-3M | 3m Length includes aluminium, diffuser + 6x end caps | IP20 | 3 metres |
| HV9693-3537-BLK | 35mm x 37mm Black deep square profile with UV Stabilised PC diffuser | IP20 | 3 metres |
| HV9693-3537-BLK-3M | 3m Length includes aluminium, diffuser + 6x end caps | IP20 | 3 metres |
| HV9693-3537-WHT | 35mm x 37mm White deep square profile with UV Stabilised PC diffuser | IP20 | 3 metres |
| HV9693-3537-WHT-3M | 3m Length includes aluminium, diffuser + 6x end caps | IP20 | 3 metres |

All low voltage products that specify an input of 12v or 24v DC must be used with a suitable LED driver, refer to pages 267 - 274
Lumen output measured at source. All globes supplied with fittings are non dimmable. If you require 240v dimmable globes refer to page 336



Square LED Profile

- Large Deep square profile
- UV Stabilised PC diffuser



| PART NUMBER | DESCRIPTION | IP RATING | MAX LENGTH |
|---------------------------|---|-----------|------------|
| HV9693-3890 | 38mm x 90mm Square profile with UV Stabilised PC diffuser | IP20 | 3 metres |
| HV9693-3890-3M | 3m Length includes aluminium, diffuser + 6x end caps | IP20 | 3 metres |
| HV9693-3890-BLK | 38mm x 90mm Black Square profile with UV Stabilised PC diffuser | IP20 | 3 metres |
| HV9693-3890-BLK-3M | 3m Length includes aluminium, diffuser + 6x end caps | IP20 | 3 metres |
| HV9693-3890-WHT | 38mm x 90mm White Square profile with UV Stabilised PC diffuser | IP20 | 3 metres |
| HV9693-3890-WHT-3M | 3m Length includes aluminium, diffuser + 6x end caps | IP20 | 3 metres |

All low voltage products that specify an input of 12v or 24v DC must be used with a suitable LED driver, refer to pages 267 - 274
Lumen output measured at source. All globes supplied with fittings are non dimmable. If you require 240v dimmable globes refer to page 336