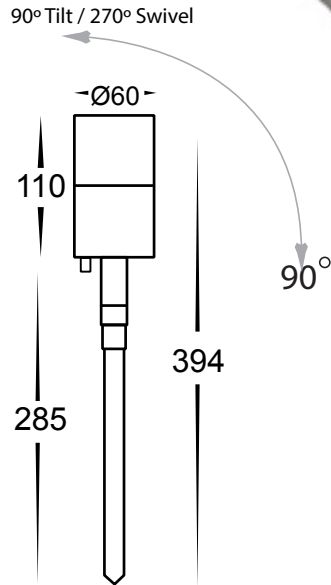
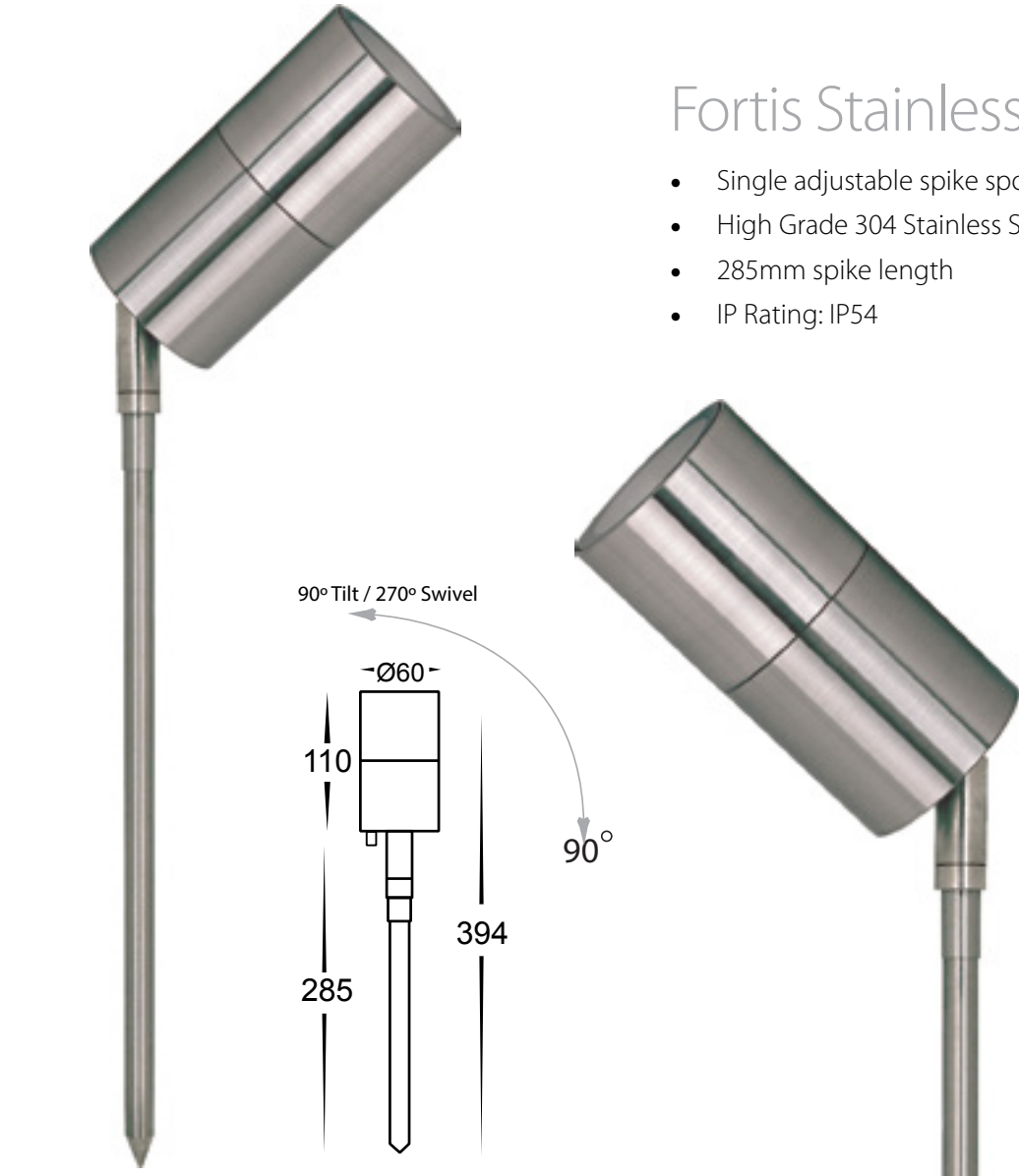


## Fortis Stainless Steel

- Single adjustable spike spotlight
- High Grade 304 Stainless Steel
- 285mm spike length
- IP Rating: IP54



Compatible with  
Tri-Colour 9in1  
3w, 5w, 7w  
12v or 24v LED Globe

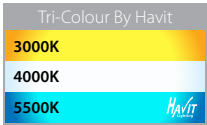
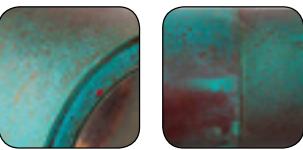


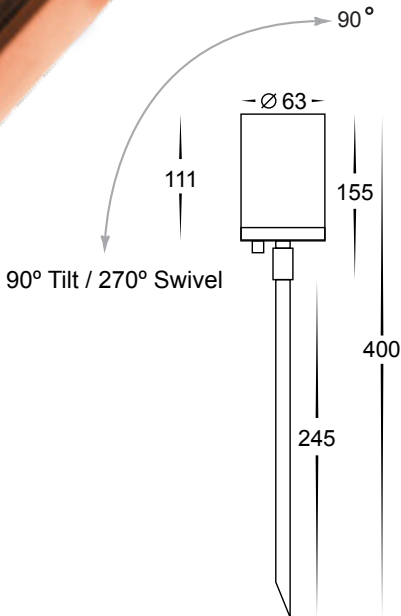
IMAGE	PART NUMBER	COLOUR TEMP	LUMENS	INPUT	INCLUDED LED
	HV1409T	3000K 4000K 5500K	270lm 285lm 300lm	12v DC	Tri-Colour 5w MR16 LED

## Eden Copper

- Single adjustable spike spotlight
- Solid Copper
- Fast weathering for classic aged appearance
- Spike length: 245mm
- 2m reinforced cable
- IP Rating: IP65



Weathered Copper



Compatible with  
Tri-Colour 9in1  
3w, 5w, 7w  
12v or 24v LED Globe

IMAGE	PART NUMBER	COLOUR TEMP	LUMENS	INPUT	INCLUDED LED
	HV1412T	3000K 4000K 5500K	270lm 285lm 300lm	12v DC	Tri-Colour 5w MR16 LED

All low voltage products that specify an input of 12v or 24v DC must be used with a suitable LED driver, refer to pages 267 - 274  
Lumen output measured at source. All globes supplied with fittings are non dimmable. If you require 240v dimmable globes refer to page 336

All low voltage products that specify an input of 12v or 24v DC must be used with a suitable LED driver, refer to pages 267 - 274  
Lumen output measured at source. All globes supplied with fittings are non dimmable. If you require 240v dimmable globes refer to page 336