

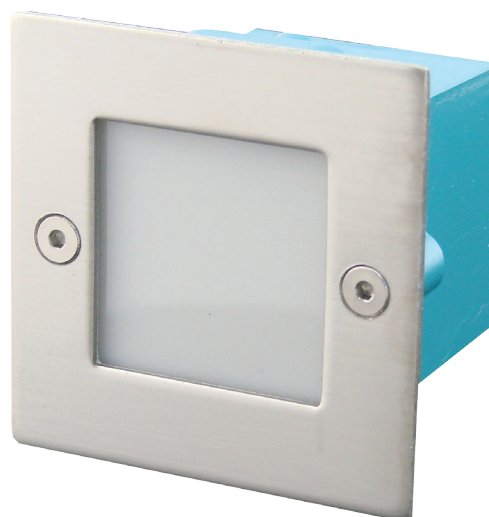
LED-834

LED Steplight



Description

Die-cast aluminium body, stainless steel plain fascia.
Ideal for subtle low level floor / path lighting.



Specification Features

Input Voltage:	240V
Power (W):	0.8W
IP rating (IP):	54
Colours:	White Blue
LED type:	SMD
CCT:	4500K
Dimmable:	No
Lifespan (hrs):	50,000hrs
Cutout:	Plaster board (L) 61mm x (H) 61mm Concrete using housing (L) 65mm x (H) 65mm

Order Code:	20848
Product Code:	LED-834-PLN-SQR-STS-BLUE
Colour:	Blue
Order Code:	20850
Product Code:	LED-834-PLN-SQR-STS-WHT
Colour:	White

Diagrams / Additional

