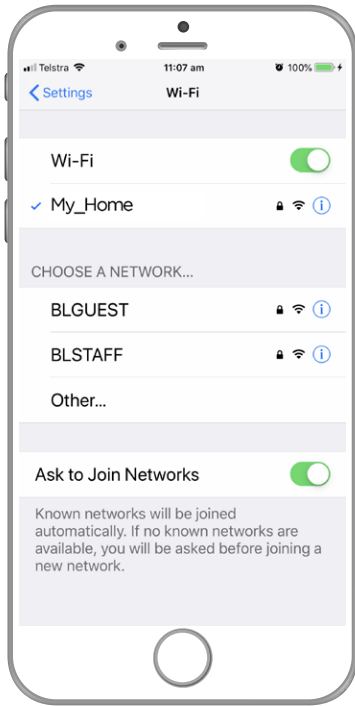


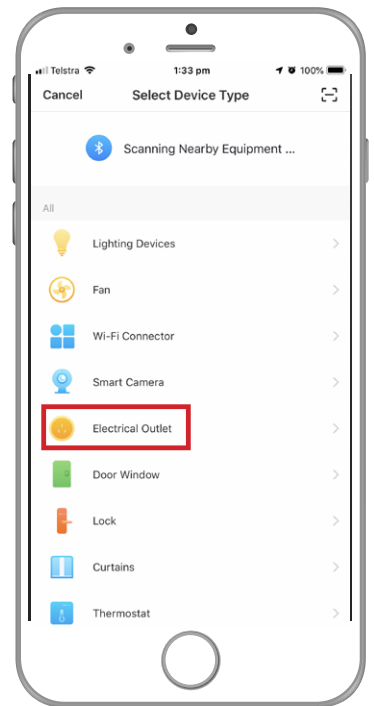
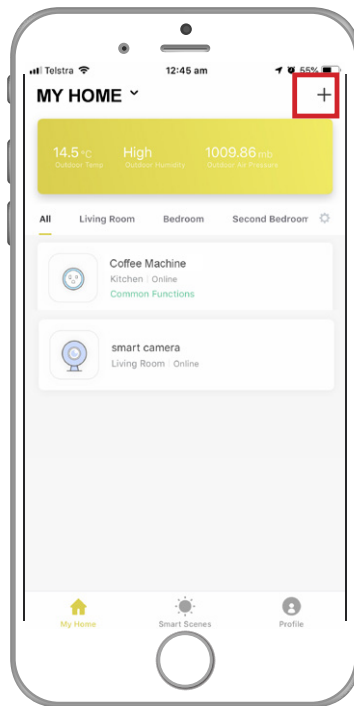
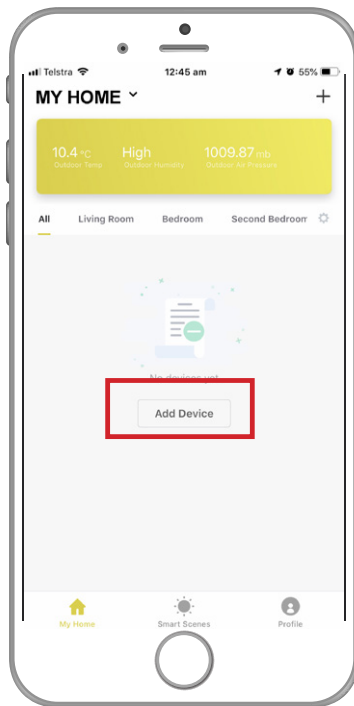
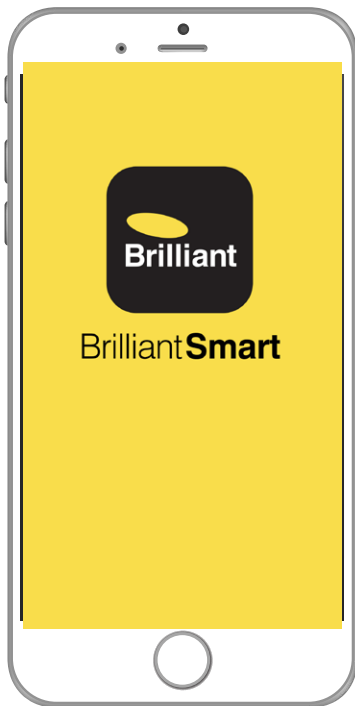
# VIDEO 3

## CONNECT TO YOUR HOME WIFI AND PAIR WITH YOUR SMART WIFI PLUG



CONNECT TO YOUR 2.4GHz HOME WiFi (NOT 5GHz)

It's important that you connect to 2.4GHz home WiFi not the 5GHz. Check that both your phone and the smart device are within range of your WiFi router.



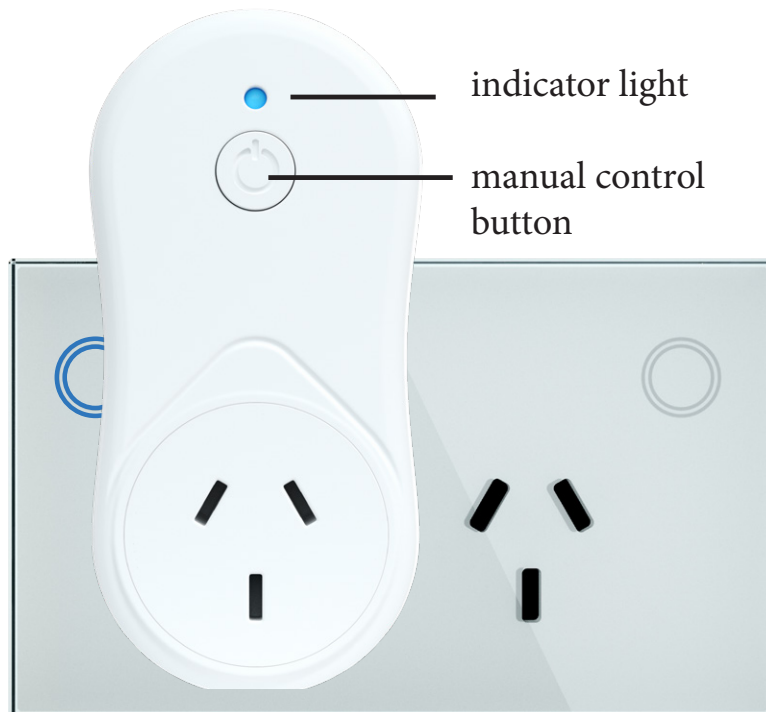
Open your Brilliant Smart App so you can connect your smart device then press add device.

If you are connecting a smart device for the first time then press add device or if you are adding another smart device press the plus sign.

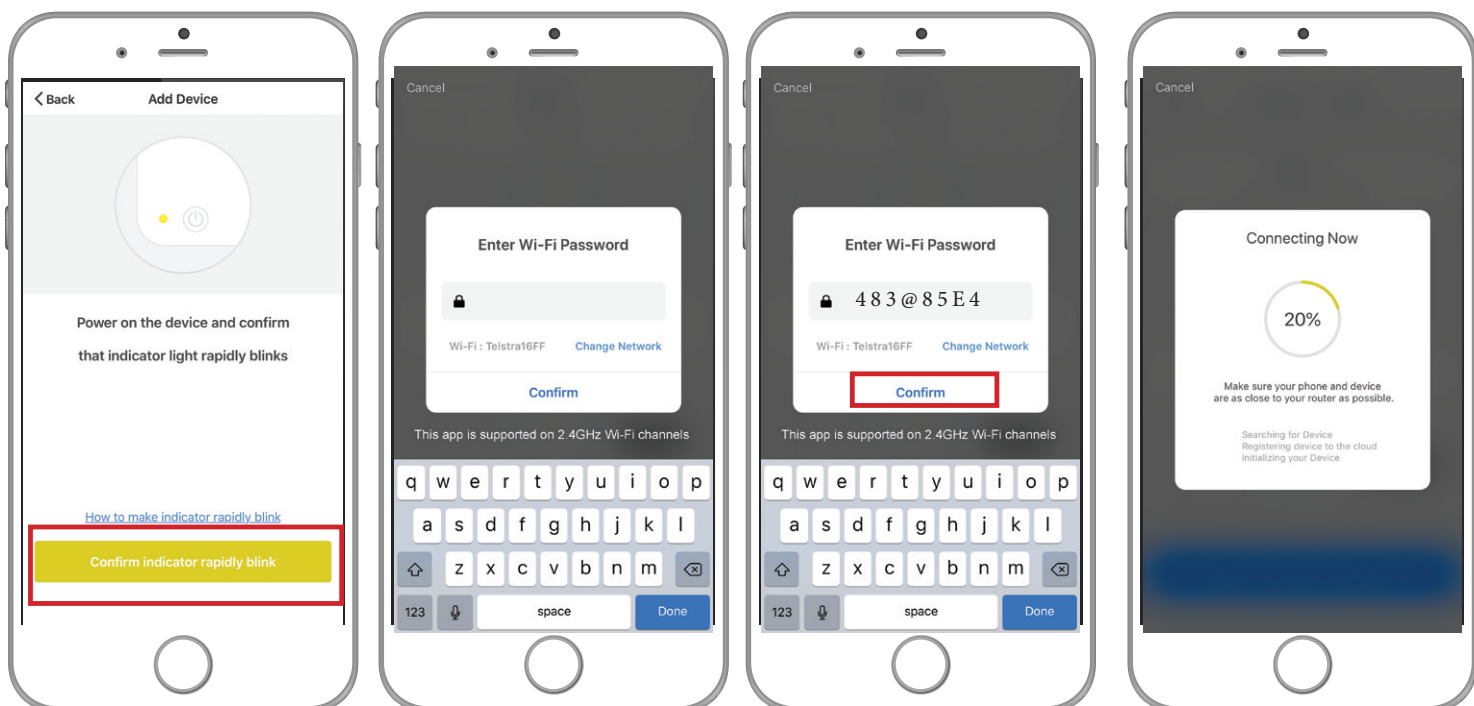
Next select the type of device you wish to add. If you're connecting a Smart Wifi Plug select Electrical Outlet. *Icons may differ depending on your phone or tablet.*

After you have selected your device insert the Smart WiFi Plug into a 240V powerpoint. The light should flash red once then turn blue (on).

If the indicator light isn't blue (on) please press manual control button once (on).

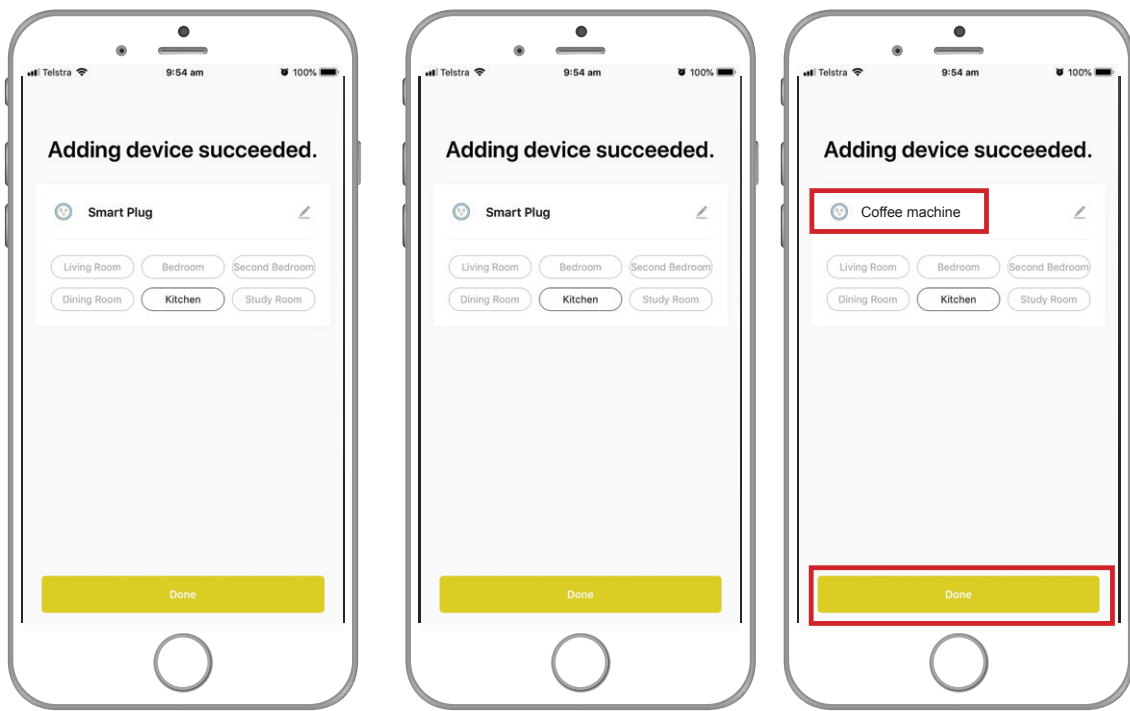


To connect the Smart WiFi Plug to your WiFi press and hold the manual control button for about 5 seconds until you hear a **click**. Let go of the button as soon as you hear the **click**. Then press button once again to activate blinking. **The red indicator light should now blink rapidly (2 times per second).**

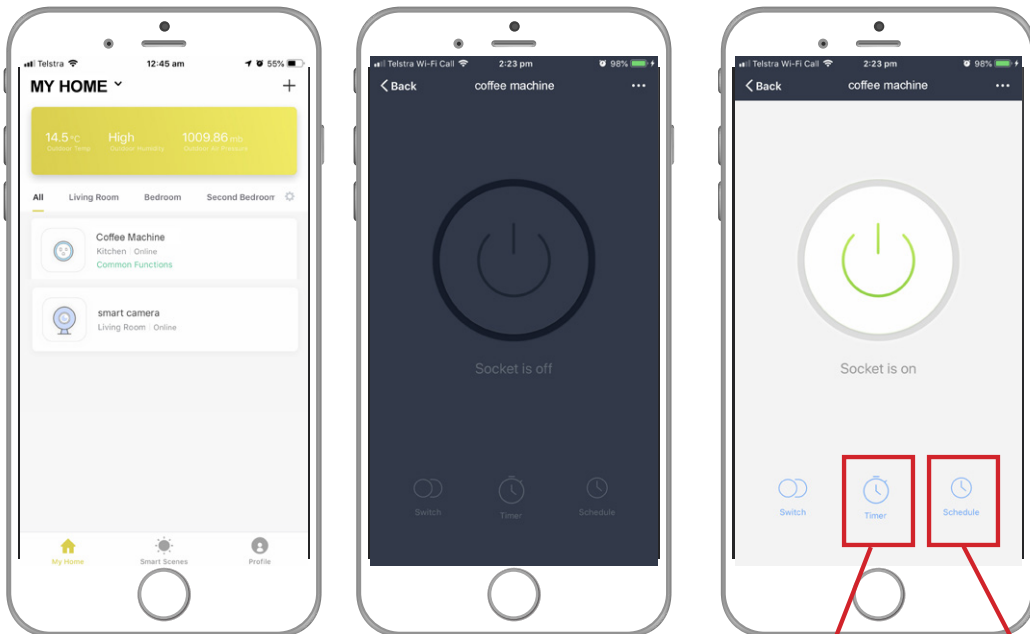


When the indicator light is blinking rapidly (2 times per second) press the confirm indicator rapidly blink button and type in your 2.4 gigahertz home WiFi password then press **'confirm'**.

Your device is now pairing with your home WiFi so wait until screen says 100%.



Once connection is successful then you can change the name of your plug to one you choose then select the room where the plug is to be located. To continue press **'done'**.



Congratulations you've connected your Smart Wifi Plug. Now you can connect your appliance and control it from anywhere by the BrilliantSmart App or voice control.

Turn your smart devices such as coffee machine, lights, radio, or your christmas tree lights, on or off or create schedules or put them on a timer.

